



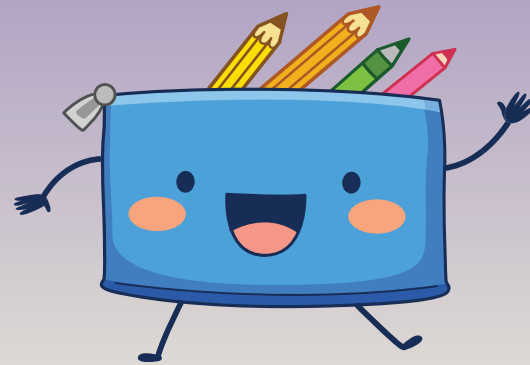
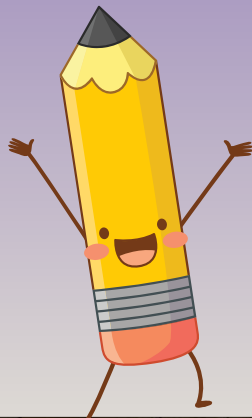
KIDS SMART DPS SUMMER CAMP



# Virtual Meet/Greet

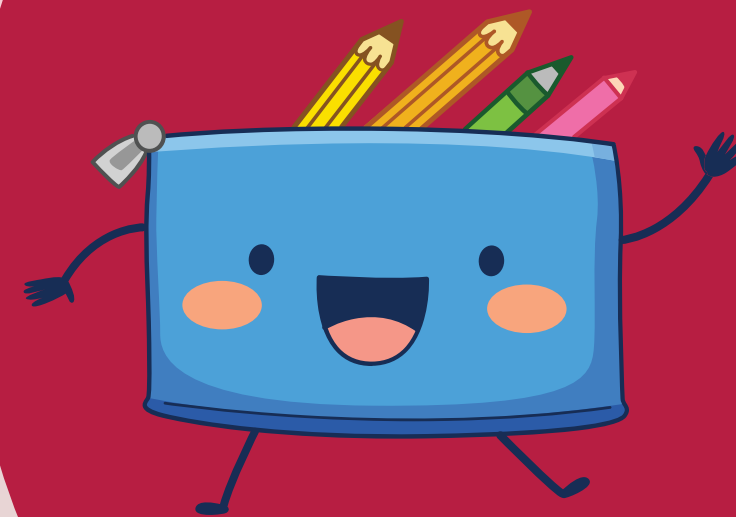
May 16, 2023

600-700p



# WELCOME PARENTS!

- Goals of tonight's Meet/Greet
  - To help families understand the general logistics and structure of our camp
  - Make sure children come to camp prepared and ready for fun
  - Clarify the process and requirements of scheduling and payments
  - To ensure comfort and understanding by parents/guardians and children so we can all have a great time this summer!
  
- **\*Virtual introduction of staff will occur after initial presentation, before question/answer portion.**



# GENERAL CAMP OVERVIEW

Camp is open 630a-6p Mon-Fri

No drop-offs prior to 6:30a

late fee of \$1/min/child assessed for pickups after 6pm

- Jeffco camps start Thursday, June 1 and run through August 10
  - \*All Camps Closed 6/19, 7/3, and 7/4 due to District Building closures
- RMP-SW camp starts Tuesday, June 6 and runs through August 10
  - \*Camp closed 6/19, 7/3, and 7/4 due to District building closures



RMP-SW:  
(text is best)

720-309-8462

Slater Camp:  
(text is best)

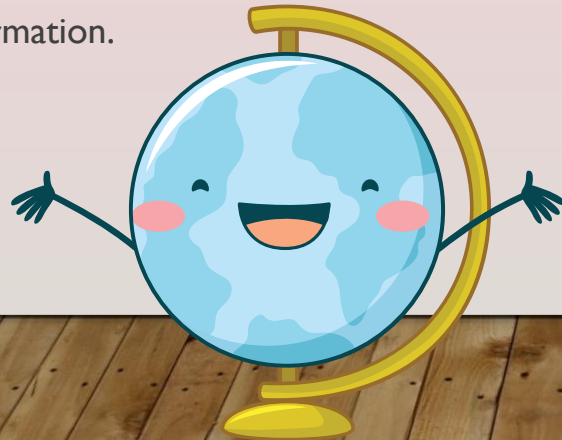
720-545-3219

Patterson Camp:  
(text is best)

720-357-6213

# DROP-OFF/PICK-UP

- Parents/Guardians **MUST** come in to drop off/pick up their children- PIN numbers will be set up if you don't already have one.
- Knock **LOUDLY**, or ring bell. Be patient while we come let you in.
- All family members must be approved to pick-up and have their own PIN for check-out.
- CCAP families must also check their children in/out on ATS laptop.
- Make sure you check the parent table for updated camp information! Parents are responsible for knowing the activities and field trips based on this information.



## RMP-SW

\*Entrance is on West side of building, through cafeteria doors

## Slater

\*Entrance is on West side of building, to the left of the main entrance

## Patterson

\*Entrance is on North West side of building, by playground



# WEEKLY ACTIVITY STRUCTURE



## Mondays: Swim Days!



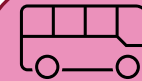
- Field trip to local pool
- Check times on weekly flyer- don't be late!
- Send children IN their suits, with change of clothes
- Remember SUNSCREEN and towel
- Goggles and life jackets only



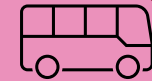
## Tuesdays: Bike Day!



- NON motorized wheels
- Must have helmet and other safety gear
- Sharing of gear will not be allowed



## Wednesdays: Field Trip Day!



- Field trip to local attractions
- District Bus, Kids SmART van, or walking
- Check times on weekly flyer- don't be late!
- Sign permission form to allow us to take your child off-site



## Thursdays: In House/Theme Day!



- Extra fun activities surrounding a certain theme, including an edible craft!

\*Review Site specific Activity calendar for more Information



## Fridays: Outreach!



- The field trip comes to us!
- Times will be listed on weekly flyer

# ECE STUDENTS

Hello RMP-SW Summer Camp ECE Families!

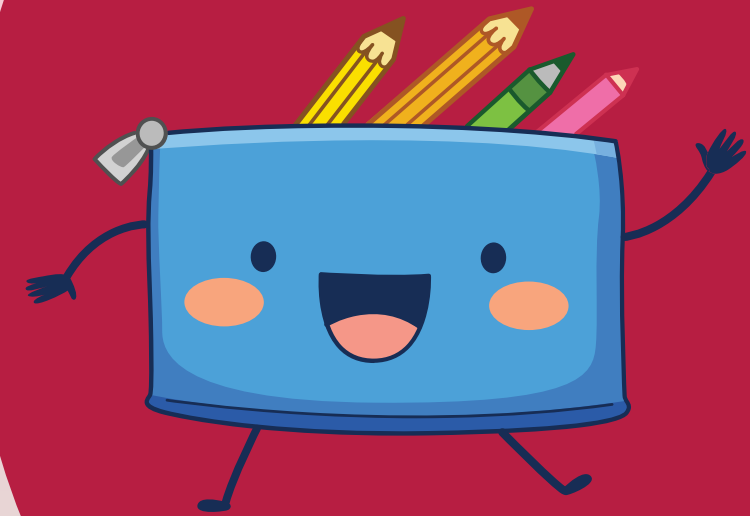
We are so excited to be able to make this summer super fun for your little ones and to ensure all families are ready to go day one we have listed some requests and reminders below:

- Provide a change of clothes in a labeled resealable plastic bag to be left on-site and replenished as needed
- Send a nap/chill time blanket for weekly use, blankets will need to go home for washing at the end of each week
- Bring a booster seat if needed for off-site trips using the Kids SmART van, drop off the booster seat the morning of the trip and bring it home at the end of the day
- Please make sure to label all the child's belongings

These reminders are in addition to general camp reminders that can be reviewed on the Camp page of our website: <https://www.kids-smart.com/summer>

Thank you for sharing your children with us and we are looking forward to a fun filled summer with them!

Sincerely,  
The Kids SmART Team





# COME PREPARED!

## \*THINGS TO BRING EVERY DAY

- **SUNSCREEN!**

- Children must have a coat applied prior to drop-off each day
- All children must have sunscreen agreement signed
  - If bringing own, be prepared to replenish weekly
  - Those who do not complete agreement by 5/25 will automatically be assessed the \$50 sunscreen fee.

- **Breakfast/Lunch**

- Will be served (and free!) most of the summer
- We will let you know dates it is not provided (all off-site lunches)
- If you have a big eater, or a picky one, feel free to send your child with their own food (must be non-perishable)

- **Labeled Water Bottle!**

- We can help them refill

- **Morning and afternoon snack**



CHILDRENS NAMES:

**JUNE 2022  
SUMMER CAMP  
(JEFFCO)**

ATTENDING CAMP:

	MONDAY	TUESDAY	WEDNESDAY	THURSDAY	FRIDAY
WEEK OF: 5/30	MEMORIAL DAY ALL PROGRAMS CLOSED	May 31	JUNE 1	JUNE 2	JUNE 3
CARE NEEDED:	<input type="checkbox"/>	FULL: 0	FULL: 0	FULL: 0	FULL: 0
WEEK OF: 6/6	JUNE 6	JUNE 7	JUNE 8	JUNE 9	JUNE 10
CARE NEEDED:	FULL: 0	FULL: 0	FULL: 0	FULL: 0	FULL: 0
WEEK OF: 6/13	JUNE 13	JUNE 14	JUNE 15	JUNE 16	JUNE 17
CARE NEEDED:	FULL: 0	FULL: 0	FULL: 0	FULL: 0	FULL: 0
WEEK OF: 6/20	JUNE 20	JUNE 21	JUNE 22	JUNE 23	June 24
CARE NEEDED:	FULL: 0	FULL: 0	FULL: 0	FULL: 0	FULL: 0
WEEK OF: 6/27	JUNE 27	JUNE 28	JUNE 29	JUNE 30	JULY 1
CARE NEEDED:	FULL: 0	FULL: 0	FULL: 0	FULL: 0	FULL: 0

**STEPS FOR CARE CALCULATION:**

1. Mark 1 next to days you will need care. Daily rate covers entire full day session 630a-600p and cannot be prorated.
2. Total the Number of Days signing up for, **MINIMUM OF 2 days/Wk REQUIRED** Payment must accompany calendar to reserve spot.
3. Limited space available. **Payment is due AT LEAST by the Wednesday prior to the upcoming week**, but it is encouraged earlier in order to increase possibility of spot. Calendars are also required for CCAP families to reserve their space.
4. For Safety and tracking purposes, please let Director know if care needs change after calendar submittal.

**DUES CALCULATION:** Number of IN HOUSE days: 0 x \$ 42.00/day = \$ 0.00      SUBTOTAL: \$ 0.00  
 Number of FT days: 0 x \$ 52.00 = \$ 0.00      X Number of Children:   
**TOTAL DUE: \$ 0.00**

\*\*Spots reserved on first paid/scheduled basis.  
 \*\* No spot is guaranteed until paid/confirmed.  
 \*\$10/day/child DROP-IN fee charged if not scheduled/paid in advance\*

# TUITION AND SCHEDULING

Schedules and payments **MUST** be turned in no later than each Wednesday for the upcoming week (earlier is better!)

10% tuition discount when paid/scheduled by 25<sup>th</sup> for upcoming month

No guaranteed spot until paid and scheduled!

- 2 day/week minimum on weeks scheduled

CCAP families must schedule as well!!!

There are no refunds/credits for unused scheduled/paid days

- If not scheduled/paid in advance, you will be charged \$10/day drop-in if your child attends (provided there is space)

- Any account carrying a balance will be denied care until paid in full

- Reserved camp spot will be removed next week if there is B/A balance.

- Tuition calendars can be submitted on-site or emailed to [admin@kids-smart.com](mailto:admin@kids-smart.com)

- Payments can be made online via [tuitionexpress.com](http://tuitionexpress.com) or on-site via cash, check, money order, or credit card. You may also opt to do auto-pay- please email [admin@kids-smart.com](mailto:admin@kids-smart.com) to get signed up for that or to request a Tuition Express account.

- See tuition calendars on your camps webpage:

[www.kids-smart.com/rmpswcamp](http://www.kids-smart.com/rmpswcamp)

[www.kids-smart.com/slatercamp](http://www.kids-smart.com/slatercamp)

[www.kids-smart.com/pattersoncamp](http://www.kids-smart.com/pattersoncamp)



Welcome KIDS SMART @  
WILMORE DAVIS

ID 1614550

XXXX - XXXX

Log In

Forgot Pin?

Not registered?

Log In as Provider

# CCAP FAMILIES

- Make sure your authorization is transferred to the summer camp site:
  - **RMP-SW 1772731**
    - Patterson 1757385                      Slater 1734755
- Clock in/outs on ATS each day (or confirming them) is required to avoid out of pocket charges
- Parent fees are due by the 1<sup>st</sup> of the month
- Schedules/Calendars are still required to reserve your child's spot!

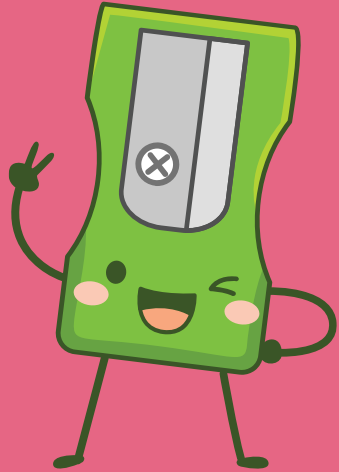
# BEHAVIOR POLICY

- Safety is our NUMBER ONE priority. If we can't keep ALL children safe, both physically and emotionally, then we have to take action.
- Positive Reinforcement is our main focus, but when needed we will use the 1-2-3 timeout process.
- If safety is a concern, we will document with a write-up. Parents/guardians will be notified of write-up upon pickup unless it results in suspension due to safety severity. Generally, we try to follow the policy of 3 write-ups resulting in 2 day suspension.
- If we are unable to maintain safety with our approved intervention methods we will call parents to pick up the child. Please know this is our last resort.

**PLEASE let us know if your child has any special care needs. The more you keep us informed, the better we can serve your children and ensure an enjoyable time at our camp**

\*Please review Parent Handbook for additional policies/Procedures

# Virtual introduction of The Kids SmART Camp Team



QUESTIONS?